

MONTHLY MEMBERSHIP PROGRESS REPORT

LOCATION SINGAPORE

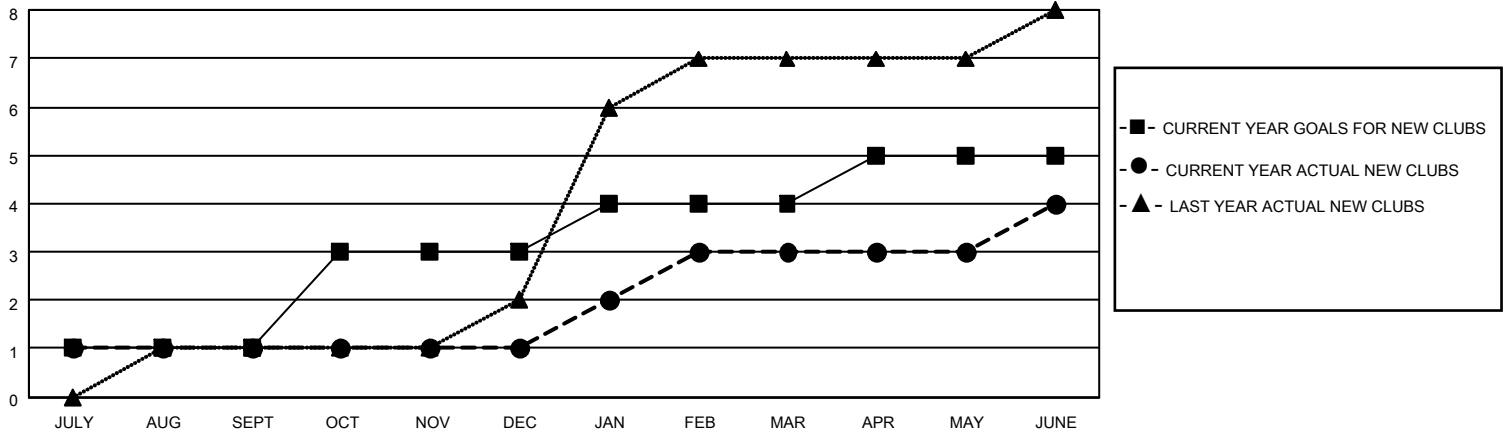
District 308 A1

Results as of: 6/30/2023

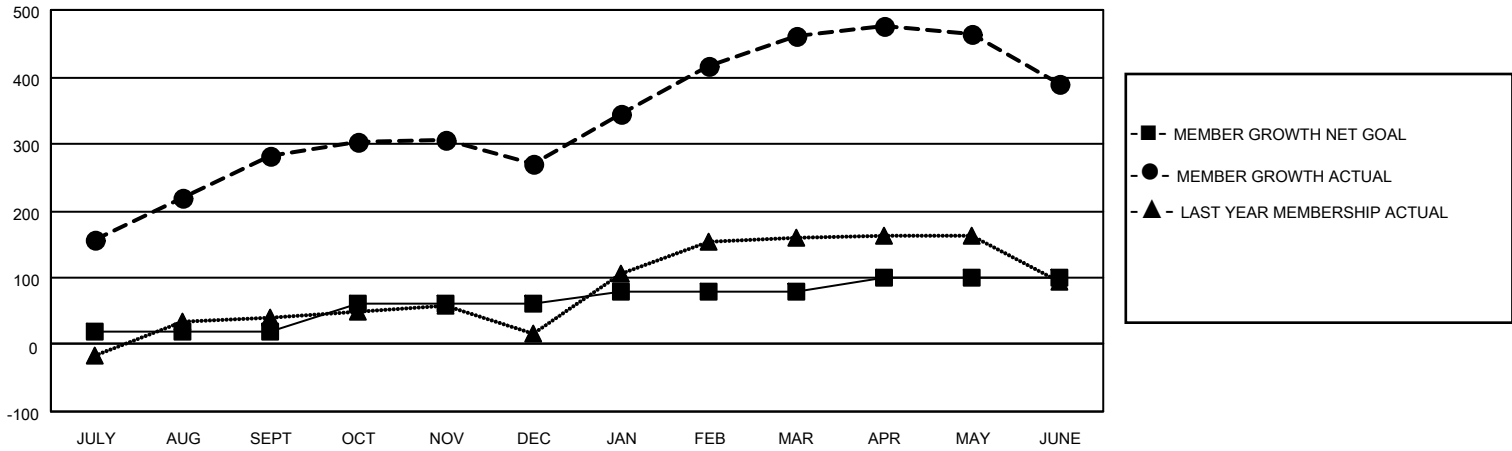
Clubs			
RESULTS FOR 2022-2023			
QUARTER	NEW CLUB GOAL	NEW CLUBS	DROPPED CLUBS
JULY/AUG/SEPT	1	1	3
OCT/NOV/DEC	2	0	1
JAN/FEB/MAR	1	2	1
APR/MAY/JUNE	1	1	0

Members			
RESULTS FOR 2022-2023			
QUARTER	MEMBER GROWTH NET GOAL	MEMBER GROWTH ACTUAL	DROPPED MEMBERS ACTUAL (including transfers)
JULY/AUG/SEPT	20	354	58
OCT/NOV/DEC	40	63	74
JAN/FEB/MAR	20	221	25
APR/MAY/JUNE	20	183	246

GOALS AND ACTUAL NEW CLUBS CUMULATIVE



GOALS AND ACTUAL MEMBERS CUMULATIVE



DROPPED CLUBS: 5

68 CLUBS OF 108 ADDED 1 OR MORE NEW MEMBERS

GENDER DISTRIBUTION

DROPPED MEMBERS

DECEASED	12
CLUB CANCELLED	28
OTHER	363
TOTAL	403

[CLICK HERE FOR CUMULATIVE MEMBERSHIP DATA](#)

MALE	1,519 (51.02%)
FEMALE	1,406 (47.23%)
NON BINARY	0 (0.00%)
PREFER NOT TO ANSWER	52 (1.75%)

TOTAL FAMILY UNIT MEMBERS 545

FAMILY MEMBERS PAYING HALF DUES 344